



MONTHLY MEMBERSHIP PROGRESS REPORT

District 121

Results as of: 06/30/2019

GMT: MIKLOS HORVATH

LOCATION POLAND

GMT CA

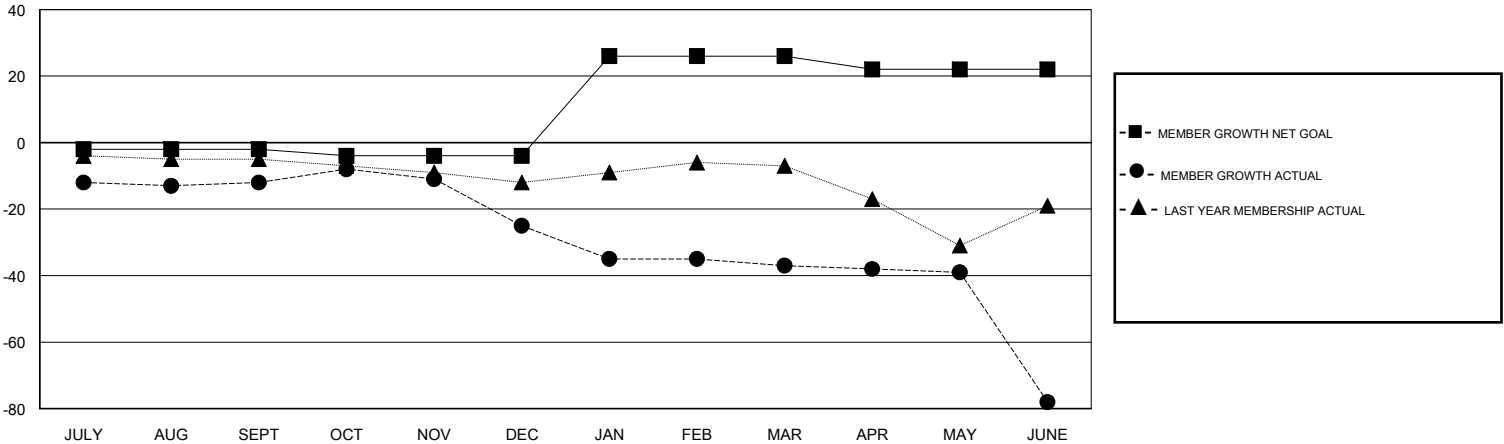
Clubs			
RESULTS FOR 2018-2019			
QUARTER	NEW CLUB GOAL	NEW CLUBS	DROPPED CLUBS
JULY/AUG/SEPT	0	0	1
OCT/NOV/DEC	0	0	0
JAN/FEB/MAR	1	0	1
APR/MAY/JUNE	0	0	0

Members			
RESULTS FOR 2018-2019			
QUARTER	MEMBER GROWTH NET GOAL	MEMBER GROWTH ACTUAL	DROPPED MEMBERS ACTUAL (including transfers)
JULY/AUG/SEPT	-2	26	22
OCT/NOV/DEC	-2	12	24
JAN/FEB/MAR	30	15	26
APR/MAY/JUNE	-4	24	61

GOALS AND ACTUAL NEW CLUBS CUMULATIVE



GOALS AND ACTUAL MEMBERS CUMULATIVE



DROPPED CLUBS: 1	26 CLUBS OF 55 ADDED 1 OR MORE NEW MEMBERS	<u>GENDER DISTRIBUTION</u>	
DROPPED MEMBERS		MALE	626 (61.01%)
DECEASED	6	FEMALE	400 (38.99%)
CLUB CANCELLED	16	Women Percentage Fiscal Year Goal: 40%	
OTHER	111	TOTAL FAMILY UNIT MEMBERS	65
TOTAL	133	FAMILY MEMBERS PAYING HALF DUES	33

[CLICK HERE FOR CUMULATIVE MEMBERSHIP DATA](#)